



سجال العربية

SIGAL ARABIA

Engineering & Consultants

COMPANY PROFILE

شهادة تسجيل فرع مؤسسة

وزارة التجارة والاستثمار
Ministry of Commerce and Investment

اسم التاجر: على محمد سعيد آل مجري

رقم السجل المدني / بطاقة الأحوال: ٠٠١٠٣٧٨١٤١٦٥

المركز الرئيسي: الرياض-العلياء-العلياء-١٨٤

ص.ب: ٠٠٧٣٧٥ الرمز البريدي: ١٢٢٢٢

رقم سجل المركز الرئيسي: ١٠١٠٣٩٦٢٣٧

النسب التجاري للفرع: مكتب سجال العربية للاستشارات الهندسية

العنوان: الرياض حي العليا شارع العليا العام

ص.ب: ٠٠٧٥٧٣ الرمز البريدي: ١٢٢٢٢

النشاط: الاستشارات الهندسية بموجب الرخصة من المهن الاستشارية رقم ٠٤٥٢٣ وتاريخ ١٤٣٦/٤/١٤٩٠

رقم السجل المدني - الإقامة: ٠٠١٠٣٧٨١٤١٦٥

اسم المدير أو الوكيل المفوض: على محمد سعيد آل مجري

الجنسية: سعودي

رأس المال: ٢٥٠٠٠

خمس و عشرون ألف ريال فقط لا غير

سلطات المدير

يشهد مكتب السجل التجاري بمدينة الرياض

وتنتهي صلاحية الشهادة في ١٤٣٨/٥/٢٦

بموجب الإيصال رقم: ٠٠٠٠٤٥٦

بأنه تم تسجيل هذه المؤسسة بسجل مدينة الرياض

و تاريخ: ١٤٣٧/٩/١٦

الختم

مدير السجل التجاري: نيف صالح الطاسان

التوقيع:

يمكنك التحقق من صحة هذه الشهادة بالدخول على <http://v.mci.gov.sa>

To Verify the Information of this certificate visit

بِسْمِ اللَّهِ الرَّحْمَنِ الرَّحِيمِ

المملكة العربية السعودية
إدارة المهن الاستشارية

الهيئة السعودية للمهندسين
شؤون المكاتب والتراخيص
الهندسية

وزارة التجارة والصناعة
وكالة الوزارة للتجارة الداخلية
إدارة المهن الاستشارية

المقر الرئيسي : الرياض

الفئة : استشارات هندسية

رقم الترخيص: ٠٤٥٢٣ تاريخ الإصدار: ١٤٣٦/٠٤/٠٩ هـ تاريخ الإنتهاء: ١٤٣٨/٠٤/٠٨ هـ

نشهد بأن الإستشاري / علي محمد سعيد آل مجرى
رقم : ١٠٣٧٨١٤١٦٥ الجنسية : سعودي

قد تم الترخيص له بمزاولة مهنة الاستشارات الهندسية

اسم المكتب : سجل العربية للاستشارات الهندسية

إستكمال الشروط المطلوبة .

الهيئة السعودية للمهندسين
BAUDI COUNCIL OF ENGINEERS
إدارة المكاتب والتراخيص
الهندسية

الأمين العام
الدكتور/ حسين بن يحيى الفاضلي

وزارة التجارة والصناعة
مدير عام المهن الاستشارية
منصور بن أحمد الخميس

(١) أي كتمسك أو تعديله في هذه الشهادة يلغونها

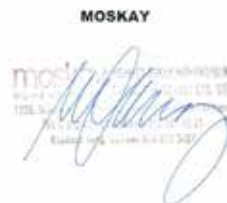
يمكن التحقق من صحة هذه الشهادة عن طريق القارئ الإلكتروني أو زيارة الرابط
<http://saudeng.sa/Arabic/Eservices/Offices/Pages/ValidateOffices.aspx>



RESPONSIBILITY MATRIX

A : SIGAL ARABIA
B : SIGAL TURKEY
C : MOSKAY

ITEM	ACTIVITY	A	B	C
LEADER OF CONSORTIUM		A		
1.0	Management			
1.1	Site Collection	A		
1.2	Management of Project	A		
1.3	Government Relation	A		
1.4	Health and safety	A		
1.5	QA & QC	A	B	C
2.0 DESIGNING AND STUDY				
2.1	Surveying work	A		
2.2	Route selection	A	B	
2.3	Engineering details of Designing of Civil Works		B	
2.4	Engineering details of Designing of Mechanical & Electrical			C
2.5	Preparation of documents for Pre-Qual and Bids	A	B	C
2.6	Preparing Drawing details		B	C



Date: November 17, 2015

To Whom it may Concern,

I, Engr Ali Mojari with a legal age, a Saudi nationality with the capacity of Company Chairman hereby, that **SIGAL ARABIA ENGINEERING CONSULTANT** is a **NEWLY ESTABLISHED COMPANY** in Riyadh Saudi Arabia with the Company Registration no. 1010431451 and Chamber of Commerce Membership no. 101000300790. For Financial Statements we don't have due to a **NEW COMPANY**.

Regards,

Eng'r Ali Mojari
Chairman



المؤسسة العامة لتحويل المياه المالحة
Saline Water Conversion Corporation



www.swcc.gov.sa

المملكة العربية السعودية

جازن - الشقيق - محطات تحلية المياه بالشقيق - ص.ب. 87 أهما 223
هاتف: 0173413400 (V.V-V.V.V) - فاكس: 0173413401 - ج.ز. المؤسسة 223
Jazan - Al-Shuqaiq - Shuqaiq Plant
PO Box 117 Al-Ha. 61431 Kingdom Of Saudi Arabia
Tel : 0173413400 Ext : 71629-71607 Fax: 0173413280 Ext Code: 223

Date: 12th December 2014

التاريخ : 12 ديسمبر 2014

TO: WHOM IT MAY CONCERN

لدى من يهمه الأمر

Herewith, We certify that Mr. Jan Vorisek was working as a Pipeline Designer and Pipeline Engineer with IBG Ltd. (2007-2013), Subcontractor of AZIZ MAPA CONSORTIUM between the period (2007-2013) and with AZIZ MAPA CONSORTIUM (since 2013 up to now) from the beginning of Shuqaiq Water Transmission System Phase-2 since March 2007 up to date.

نشهد نحن بذلك ان السيد جان فورسيك كان يعمل مصمما لخط نقل المياه مع شركة اى بى جى التي كانت مقول باطن لعضامن عزيز مايا في الفترة من 2007 الى 2013 ثم مع تشامن عزيز مايا في الفترة من 2013 حتى الان وبذلك فهو يعمل في مشروع نظام نقل المياه الشقيق 2 منذ شهر مارس 2007 حتى الان.

Mr. Jan Vorisek worked as responsible for pipeline alignment sheets preparation, solving problems of obstacles, negotiation with Municipality and Ministry Authorities regarding pipeline routing.

و كان السيد فورسيك مسؤول عن تحديد مسار خط الانابيب و تحضير المخططات اللازمة لذلك و حل مشاكل التصميم و تغير المسارات التي تتعارض مع الطرق العامة او الاملاك الخاصة و خالقه

Whole Phase-2 project has six Water Transmission Systems, total length 960 km, 23 pipe diameters (8" to 80"), 8 Pump Stations, 4 Tunnels, 44 Steel Tanks RS and 10 Concrete RS.

و كان مشروع نظام نقل المياه يحتوي في مجمله على ستة فروع لتوصيل المياه يبلغ اجمالي طولها الى 960 كيلومترا تتراوح الالطار فيها من 3 بوصة الى 80 بوصة بالإضافة الى 8 محطات رفع و 44 خزان من الحديد الصلب و 10 خزانات خرسانة سمات مختلفة

Mr. Jan Vorisek was preparing documentation:

- Overview Maps of whole system 1 : 250 000
- Route Maps of separately systems 1 : 10 000
- Detail Route Maps of separately systems 1 : 2 000
- Map of Obstacles 1 : 2 000
- Alignment sheets 1 : 2 000
- Work alignment sheets 1 : 2 000
- Special crossing drawings 1 : 200
- Work special drawings for dealing with Authorities,
- As-built alignment sheets 1 : 2 000.

و كانت مهمة السيد فورسيك هي تحضير المستندات الاتية
- مخطط عام على القرائط لكل الموقع بمقياس 1 : 250 000
- تحديد المسارات على القرائط للمخططات بمقياس 1 : 10 000

- تحديد المسارات بالتفصيل على القرائط بمقياس 1 : 2 000

- خرائط معوقات المسارات بمقياس 1 : 2 000

- مخططات تحديد المسار بمقياس 1 : 2 000

- مخططات العبور الخاصة بمقياس 1 : 200

- مخططات مفصلة للتعامل مع المستويين

- مخططات المسارات كما تم انشاؤها في المواقع بمقياس 1 : 2 000

Herewith, we certify that Mr. Jan Vorisek has completed 99% of his part of overall Project, corresponding to 85,000,000 USD. This is provided us by requested by him.

و نحن هنا نشهد ان السيد فورسيك قد اتم اجاز 99 ٪ من اصاله على مدار المشروع بالكامل بقيمة اجمالية 85 000 000 دولار امريكي و قد اعطيت له هذه الشهادة بناء على طلب منه

Khalid Mohammad Hassan Al Safi
Chairman Supervision committee
SWCC - Shuqaiq WTS Project

خالد محمد حسن الصافي
رئيس لجنة الاشراف
المؤسسة العامة لتحويل
مشروع نقل مياه الشقيق المرحلة الثانية



Ali Mohammed Saeed Mojari

ABHA

+966505191990

Mojari.office@gmail.com

EDUCATION:

May 1989 :

Bachelor Degree In civil engineering from King Fahd University.

WORK EXPERIENCE:-

Dec2012- present:

Founded Subr Int Company, which mainly works at the contracting field in addition to trading activities.

JULY 2009- Dec 2012:

COMPANY Representative and works AS A SUPPORT GROUP MANAGER AT SWTS PHASE 2 PROJECT at JAZAN AND ASSIR regions..

- Represents my company in Jazan and Assiri region.
- Supervising many civil works at our project area.
- Handled many problems with the governmental directorates.
- Participated with management to achieve a noticed progress.
- Participated in solving many problems with the citizens at our project area.

DEC 2006-JUL 2007

worked as projects management manager on 12 Degree Ministry of Water And Electricity Assir Region.

- Responsible for several projects and responsible for hiring supervisors for those projects.

March 2003-Dec 2006

worked as a manager at water and Electricity directorate 11 degree.

Feb 98-March 2003

worked at AHAD ROFIDAH branch of water and electricity 10th degree.

April 94- FEB 98

worked at assir region branch of water and electricity as a civil engineer at projects management.

SEP 91- April 94

worked as a civil engineer at projects management at the branch of water and electricity assir region.

JUL 89 – Sep 91

worked a operating engineer at operation and maintenance department at the branch of water and electricity directorate assir region.

Available opportunities:

Based on our experiences and works either personal or through our company's relations and also through our personal communications, we are able to find sort of opportunities for consulting projects from Ministry Of Water and Electricity, Ministry of Housing and Ministry of municipalities.

CURRICULUM VITAE

- | | |
|--------------------------|-------------------------------------|
| 1. Family name: | V O Ř Í Š E K |
| 2. First names: | Jan |
| 3. Date of birth: | 26th October 1953 |
| 4. Nationality: | Czech Republic |
| 5. Civil status: | Married |
| 6. Education: | |



<i>Institution:</i>	Czech Technical University in Prague, Faculty of Civil Engineering, specialisation in geodetic surveying (Czech Rep.)
<i>Date: from (year/month): to (year/month):</i>	1973 1978
<i>Degree(s) or Diploma(s) obtained:</i>	Ing. (M.Sc.) in Civil Engineering
<i>Institution:</i>	Charles University in Prague, Natural Sciences Faculty, specialisation geology (Czech Rep.)
<i>Date: from (year/month): to (year/month):</i>	1982 1983
<i>Degree(s) or Diploma(s) obtained:</i>	Postgradual degree

7. Language skills: (Mark 1 to 5 for competence, 1 – excellent, 5 - basic)

Language	Reading	Speaking	Writing
Czech (mother tongue)	1	1	1
English	2	1	2
German	3	4	3
Russian	2	2	3

8. Other skills:

- Advanced computer literacy
 - MicroStation V8i
 - InRoads
 - ArcMap
 - Global Mapper
 - QGIS
 - Corel DRAW
 - Microsoft Office
 - And many others
- Driving licence

9. Present position: Pipeline Engineer and Designer, Survey and GIS Specialist

10. Key qualifications:

- Pipeline Design – alignment sheets preparation
- Pipeline Engineer – Pipeline route selection, Preparation of document for Route approvals
- Geodetic Surveys
- Cartography
- Geographic information systems

11. Specific Countries Experience:

Country	Date: from (year/month) to (year/month)
Czech Republic	1978 - to date
Mongolia	1981, 1982, 1985, 1988
Laos	1983-84
Tanzania	1986-87, 1991
Russia	1990
Gemany	1991
Nigeria	1992-1993
U.A.E.	2001-2002
Oman	2003
Saudi Arabia	2005
Libya	2005-2007
U.A.E.	2007
Saudi Arabia	2007-2016

13. Professional Experience Record:

<i>Date: from (year/month) to (year/month)</i>	2015 March till 2016 March
<i>Location:</i>	Jeddah, Riyadh (Saudi Arabia)
<i>Company:</i>	Fichtner Consulting Engineers, Saudi Arabia
<i>Position:</i>	Pipeline Engineer
<i>Description of work:</i>	MASTER PLAN FOR IMPROVEMENT OF WATER TRANSMISSION LINES AND SUPPLY SYSTEM IN ASIR, JAZAN, MAKKAH AND AL BAHA REGIONS:Data collection of water sources and Infrastructure inventory (Desallination Plants, Water Treatment Plants, Pumping Stations, Reservoirs, Pipelines, Track Filling Stations, Wells, Dams). Verification of data and implementation into GIS.database.

<i>Date: from (year/month) to (year/month)</i>	2007 March till 2014 December
<i>Location:</i>	Shuqaiq, Abha (Saudi Arabia)
<i>Company:</i>	IBG, AZIZ MAPA Consortium
<i>Position:</i>	Pipeline Engineer, Field Team Leader
<i>Description of work:</i>	SHUQAIQ-ABHA WATER TRANSMISSION SYSTEM, Data verification, Pipeline Routing, R.O.W. Documentation, Documentation for approvals, Alignment Sheet preparation 1:2000/200 (Documentation for construction and as-built documentation)
<i>Date: from (year/month) to (year/month)</i>	2007 June till 2007 August
<i>Location:</i>	Abu Dhabi (U.A.E.)
<i>Company:</i>	ILF Consulting Engineers
<i>Position:</i>	Pipeline Engineer
<i>Description of work:</i>	TAWEELAH TO QIDFA GAS PIPELINE: Data verification, Alignment Sheet preparation 1:10000/100 (Tender Documentation)
<i>Date: from (year/month) to (year/month)</i>	2005 October till 2007 June
<i>Location:</i>	Tripoli, Zwara (Libya)
<i>Company:</i>	ILF Consulting Engineers
<i>Position:</i>	Pipeline Engineer, Designer
<i>Description of work:</i>	GREAT MAN-MADE RIVER PROJECT, GHADAMES – ZWARA – AZ ZAWIYAH WATER SYSTEM: Data verification, Pipeline Routing, R.O.W. Documentation, Documentation for approvals, Alignment Sheet preparation 1:1000/200 (Documentation for construction)
<i>Date: from (year/month) to (year/month)</i>	2005 (May-July)
<i>Location:</i>	Abha (Saudi Arabia)
<i>Company:</i>	IKP Consulting Engineers
<i>Position:</i>	Pipeline Engineer
<i>Description of work:</i>	SHUQAIQ PHASE 2 WATER TRANSMISSION SYSTEMS: Pipeline Routing, data preparation for Tender documentation, GPS surveying, digital terrain model

<i>Date: from (year/month) to (year/month)</i>	2004
<i>Location:</i>	Prague (Czech Republic)
<i>Company:</i>	IKP Consulting Engineers
<i>Position:</i>	General Project Designer
<i>Description of work:</i>	INDUSTRIAL AREA KOLIN FOR TPCA (TOYOTA, PEUGEOT, CITROEN): General Project Designer
<i>Date: from (year/month) to (year/month)</i>	2003
<i>Location:</i>	Sultanate of Oman
<i>Company:</i>	ILF Consulting Engineers
<i>Position:</i>	Pipeline Engineer
<i>Description of work:</i>	CRUDE OIL PIPELINE MUSCAT-SOHAR: P/L routing, GPS surveying, digital model of terrain, data conversion, alignment sheets 1:10000, Tender Documentation
<i>Date: from (year/month) to (year/month)</i>	2003-2004
<i>Location:</i>	Prague (Czech Republic)
<i>Company:</i>	ILF Consulting Engineers
<i>Position:</i>	Coordinator of CAD works (Alignment sheets, Surveying)
<i>Description of work:</i>	THREE NEW WATER PIPELINE PROJECTS IN SAUDI ARABIA: . 800 km alignment sheets 1:2000, 1:5000, Tender documentation
<i>Date: from (year/month) to (year/month)</i>	2002
<i>Location:</i>	United Arab Emirates, Abu Dhabi, Fujairah
<i>Company:</i>	ILF Consulting Engineers
<i>Position:</i>	Project design
<i>Description:</i>	FUJAIRAH WATER PIPELINE: Drinking water pipeline, 160 km, project design, alignment sheets 1: 2 000, 1:1 000
<i>Date: from (year/month) to (year/month)</i>	2001
<i>Location:</i>	Prague, Czech Republic
<i>Company:</i>	ILF Consulting Engineers
<i>Position:</i>	Manager of CAD and GIS works
<i>Description:</i>	OPTICAL CABLE PRAGUE – VIENNE – BRATISLAVA: New optical cable route, 350 km, alignment sheets 1:2 000, overview maps 1:50 000

Brief About Jan Vorisek

<i>Date: from (year/month) to (year/month)</i>	2000
<i>Location:</i>	Prague, Czech Republic
<i>Company:</i>	ILF Consulting Engineers
<i>Position:</i>	Coordination of geodetic documentation, geodetic surveys
<i>Description:</i>	RAILWAY MODERNISATION: Usti n/L – Povrvly /Decin, 5 km, track reconstruction, track layout solution, bridges, supporting walls, ground objects, construction design and tender
<i>Date: from (year/month) to (year/month)</i>	1999
<i>Location:</i>	Prague, Czech Republic
<i>Company:</i>	ILF Consulting Engineers
<i>Position:</i>	Coordination of geodetic documentation, geodetic surveys
<i>Description:</i>	RAILWAY MODERNISATION: Kolin – Zabori (Prelouc). 6 km, track reconstruction, track layout solution, bridges, supporting walls, ground objects, construction design and tender
<i>Date: from (year/month) to (year/month)</i>	1999
<i>Location:</i>	Prague (Czech Republic)
<i>Company:</i>	ILF Consulting Engineers
<i>Position:</i>	Coordination of geodetic documentation, geodetic surveys
<i>Description:</i>	RAILWAY MODERNISATION: Prague-Liben – Prague-Bechovice. 12 km, complete solution including flyover crossings, documentation for the zoning permit
<i>Date: from (year/month) to (year/month)</i>	1999
<i>Location:</i>	Prague (Czech Republic)
<i>Company:</i>	ILF Consulting Engineers
<i>Position:</i>	Coordination of geodetic documentation, geodetic surveys
<i>Description:</i>	RAILWAY MODERNISATION: Hranice – Polom (Studenka). 12 km, track reconstruction, track layout solution, bridges, supporting walls, ground objects, construction design and tender
<i>Date: from (year/month) to (year/month)</i>	1998
<i>Location:</i>	Prague (Czech Republic)
<i>Company:</i>	ILF Consulting Engineers
<i>Position:</i>	Coordination of geodetic documentation, digital terrain model
<i>Description:</i>	TRACK MODERNISATION: Cervenka – Zabreh. 25 km, double track, four railway stations, documentation for the zoning and construction permit.

<i>Date: from (year/month) to (year/month)</i>	1997
<i>Location:</i>	Prague (Czech Republic)
<i>Company:</i>	ILF Consulting Engineers
<i>Position:</i>	Geodetic survey management
<i>Description:</i>	JINOCANY SEWERAGE SYSTEM AND WASTE WATER TREATMENT PLANT:. Documentation for the zoning and construction permit, measuring of the existing state 1:500, digital terrain model, documentation in digital form
<i>Date: from (year/month) to (year/month)</i>	1996-01
<i>Location:</i>	Prague (Czech Republic)
<i>Company:</i>	ILF Consulting Engineers
<i>Position:</i>	Coordination of the geodetic surveys
<i>Description:</i>	COMPLEX DRUZHBA OIL PIPELINE MODERNISATION: Laying of optical wires, 360 km length, reconstruction of 20 new remote control line valve, pumping and terminal stations, documentation for the zoning and construction permit
<i>Date: from (year/month) to (year/month)</i>	1996
<i>Location:</i>	Prague (Czech Republic)
<i>Company:</i>	ILF Consulting Engineers
<i>Position:</i>	Coordination of the geodetic surveys
<i>Description:</i>	NELAHOZEVES RAILWAY TUNNEL CONSTRUCTION:. 2,5 km track, one new and three existing tunnels, documentation for the zoning and construction permit, digital terrain model, documentation in digital form
<i>Date: from (year/month) to (year/month)</i>	1996
<i>Location:</i>	Prague (Czech Republic)
<i>Company:</i>	ILF Consulting Engineers
<i>Position:</i>	coordination of the geodetic surveys and measuring of the existing state
<i>Description:</i>	WATER SUPPLY AND SEWERAGE SYSTEM KOCANDA – OSNICE:. Documentation for the zoning and construction permit, digital terrain model

<i>Date: from (year/month) to (year/month)</i>	1996
<i>Location:</i>	Prague (Czech Republic)
<i>Company:</i>	ILF Consulting Engineers
<i>Position:</i>	Geodetic survey management
<i>Description:</i>	SUPERMARKET CSPH, VESTEC: Documentation for the zoning and construction permit, survey of the existing state, digital terrain model, documentation in digital form
<i>Date: from (year/month) to (year/month)</i>	1996
<i>Location:</i>	Prague (Czech Republic)
<i>Company:</i>	ILF Consulting Engineers
<i>Position:</i>	Geodetic survey management
<i>Description:</i>	HYPERMARKET AUCHAN PRUHONICE: Documentation for the zoning and construction permit, survey of the existing state, digital terrain model, documentation in digital form
<i>Date: from (year/month) to (year/month)</i>	1996
<i>Location:</i>	Prague (Czech Republic)
<i>Company:</i>	ILF Consulting Engineers
<i>Position:</i>	Geodetic survey management
<i>Description:</i>	ROAD RECONSTRUCTION DOBREJOVICKA, PRUHONICE: Zoning and construction permit, project documentation in digital form, scale 1:500, staking out
<i>Date: from (year/month) to (year/month)</i>	1995
<i>Location:</i>	Prague (Czech Republic)
<i>Company:</i>	ILF Consulting Engineers
<i>Position:</i>	Geodetic survey management
<i>Description:</i>	HIGHWAY JUNCTION HRADEC KRALOVE: Geodetic documentation for the zoning and construction permit, digital terrain model
<i>Date: from (year/month) to (year/month)</i>	1994
<i>Location:</i>	Prague (Czech Republic)
<i>Company:</i>	ILF Consulting Engineers
<i>Position:</i>	Geodetic survey management
<i>Description:</i>	WATER SUPPLY PIPELINE JESENICE-ZDIMERICE-DOBREJOVICE: Project documentation, survey of the existing situation 1:500, staking out

<i>Date: from (year/month) to (year/month)</i>	1994
<i>Location:</i>	Prague (Czech Republic)
<i>Company:</i>	ILF Consulting Engineers
<i>Position:</i>	Geodetic survey management
<i>Description:</i>	WASTE WATER TREATMENT PLANT KOLIN: Geodetic documentation for the zoning and construction permit, linear profile, sewerage network
<i>Date: from (year/month) to (year/month)</i>	1993
<i>Location:</i>	Prague (Czech Republic)
<i>Company:</i>	ILF Consulting Engineers
<i>Position:</i>	Geodetic survey management
<i>Description:</i>	DIGITAL MAP PRUHONICE-CESTLICE-ZDIMERICE: Survey of the existing situation 1:500, digital terrain model
<i>Date: from (year/month) to (year/month)</i>	1993
<i>Location:</i>	Prague (Czech Republic)
<i>Company:</i>	ILF Consulting Engineers
<i>Position:</i>	Geodetic survey management
<i>Description:</i>	WATER SUPPLY PIPELINE VESTEC – PRUHONICE: Project documentation, survey of the existing situation 1:500
<i>Date: from (year/month) to (year/month)</i>	1993
<i>Location:</i>	Prague (Czech Republic)
<i>Company:</i>	ILF Consulting Engineers
<i>Position:</i>	Geodetic survey management
<i>Description:</i>	ROAD RECONSTRUCTION NOVOSIBRINSKA AND STAROKOLINSKA: including detours, Ujezd nad Lesy. Project documentation, survey of the existing situation, digital terrain model
<i>Date: from (year/month) to (year/month)</i>	1993
<i>Location:</i>	Pilsen (Czech Republic)
<i>Company:</i>	ILF Consulting Engineers
<i>Position:</i>	Geodetic survey management
<i>Description:</i>	UHLVASKY SEWERAGE PIPE: Tunnel deformation survey

Brief About Jan Vorisek

<i>Date: from (year/month) to (year/month)</i>	1992-1993
<i>Location:</i>	Nigeria
<i>Company:</i>	ILF Consulting Engineers
<i>Position:</i>	Geodetic survey management and coordination, team leader.
<i>Description:</i>	CRUDE OIL PIPELINE AUCHI-KADUNA, JOS GOMBE, SULEJA-MINNA: 800 km length, project design for construction
<i>Date: from (year/month) to (year/month)</i>	1991-1992
<i>Location:</i>	Germany
<i>Company:</i>	ILF Consulting Engineers
<i>Position:</i>	Member of survey team
<i>Description:</i>	SCHÖNREIN TUNNEL FOR A NEW HIGH SPEED RAILWAY:, realisation, convergent survey with geodetic methods
<i>Date: from (year/month) to (year/month)</i>	1991
<i>Location:</i>	Tanzania
<i>Company:</i>	GEOINDUSTRIA GMS
<i>Position:</i>	Survey team leader
<i>Description:</i>	GRAPHITE DEPOSITS NDOLOLO: Large scale mapping, construction survey, geodetic activities for geologic surveys. Route design of a gravitational water pipeline
<i>Date: from (year/month) to (year/month)</i>	1988
<i>Location:</i>	Mongolia
<i>Company:</i>	Intergeo Prague
<i>Position:</i>	Applied geodesy for geological survey, management and observation of surface mining, mapping, inventory calculations for non-renewable resources
<i>Description:</i>	Geological survey of SnO ₂ DEPOSIT CHUZICHAN, Mongolia, 1:500 mapping, geodetic survey management

<i>Date: from (year/month) to (year/month)</i>	1986-1987
<i>Location:</i>	Tanzania
<i>Company:</i>	Intergeo Prague
<i>Position:</i>	Member of geological expedition, survey team leader.
<i>Description:</i>	Applied geodesy for geological survey, management and observation of surface mining, mapping, inventory calculations for non-renewable resources. Geological survey of graphit DEPOSITS IN NDOLOLO, Tanzania, 1:1 000 mapping, staking out, inventory calculations, geodetic survey management, deposits modelling
<i>Date: from (year/month) to (year/month)</i>	1985
<i>Location:</i>	Mongolia
<i>Company:</i>	Intergeo Prague
<i>Position:</i>	Member of team of Inventory calculation.
<i>Description:</i>	Applied geodesy for geological survey, management and observation of surface mining, mapping, inventory calculations for non-renewable resources. Inventory calculations for WO3 deposits in ONGON CHAJRCHAN, Mongolia, control of the geodetic reference material, construction surveying, geodetic survey management.
<i>Date: from (year/month) to (year/month)</i>	1983-84
<i>Location:</i>	Laos
<i>Company:</i>	Intergeo Prague
<i>Position:</i>	Member of team geological expedition, Survey team leader.
<i>Description:</i>	Applied geodesy for geological survey, management and observation of surface mining, mapping, inventory calculations for non-renewable resources. Geological survey and test mining for Sapphire in BAN HOUEI SAI, Laos, 1: 500 and 1:2 000 mapping, reference material for inventory calculations, geodetic survey management
<i>Date: from (year/month) to (year/month)</i>	1982 and 1981
<i>Location:</i>	Mongolia
<i>Company:</i>	Intergeo Prague
<i>Position:</i>	Survey team leader.
<i>Description:</i>	Applied geodesy for geological survey, management and observation of surface mining, mapping, inventory calculations for non-renewable resources. Mining of diluted SnO ₂ deposits in MODOTO, Mongolia, mapping, mining control and management, construction surveying, geodetic survey management

WORLD ACTIVITIES



OFFERING OF SERVICES:

- Pipeline Route Selection
- Pipeline Design
 - Tender Documentation
 - Documentation for approvals
 - Detail design
 - Overview Maps
 - Route Maps
 - Alignment Sheets
 - As-built documentation
- GIS

CONTACT:

Mr. Jan Vorisek

Phone:

+966530976870

Phone:

+420776097232

jfv.info@yahoo.com

LIST OF REFERENCES

LIST OF REFERENCES				
Ref. No.:	Country	Description	Scope of work	Year
01	Nigeria	NNPC Pipeline and Depots, Phase III	Pipeline route selection and design for construction	1992-94
02	Czech Republic	Modernisation of pipeline Druzhba	Route Map of FOC (route design)	1997-98
03	UAE	Fujairah Power and Pipeline Project	Pipeline route selection and design for construction	2001-02
04	Oman	Muscat-Sohar Crude Oil Pipeline	Pipeline route selection and design for Tender documentation	2003
05	KSA	Three New Pipeline Projects	Pipeline route selection and design for Tender documentation	2003-04
06	Czech Republic	TPCA Industrial area Kolin	General Project Designer	2004
07	Libya	GMMR, Phase II	Pipeline route selection and design for construction	2005-07
08	KSA	Shuqaiq WTS, Phase II	Pipeline route selection and design for construction	2007-14
09	KSA	Master Plan for Improvement of Water Transmission Lines and Supply Systems in Asir, Jazan, Makkah and Al Baha Regions	Field and archive data collection, verification and implementation into GIS database. Creating maps and documents for approval	2015-16



JAN VORISEK

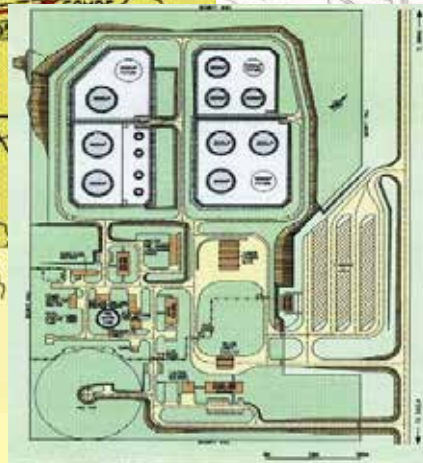
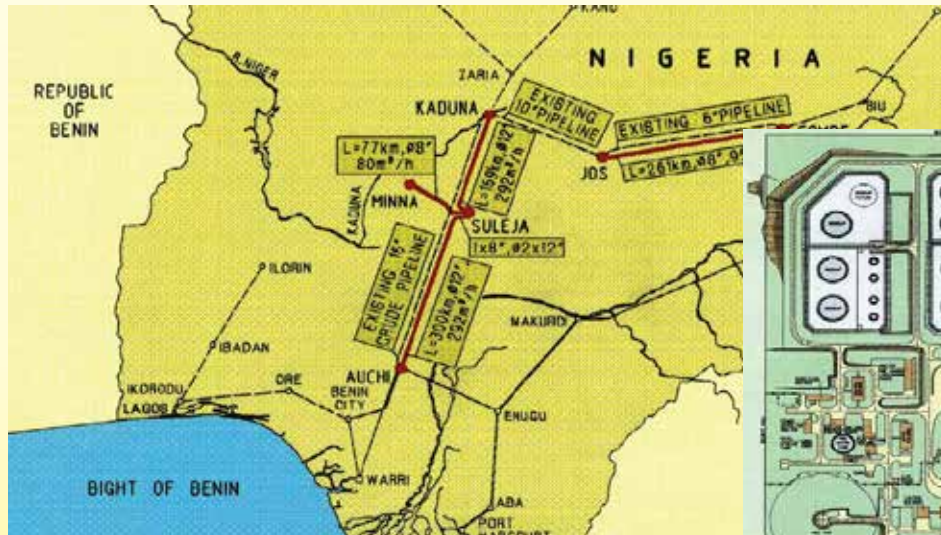
REFERENCE 01

NNPC PIPELINE AND DEPOT PROJECT, PHASE III, AUCHI-KADUNA, JOS-GOMBE

NIGERIA



- Client:** National Nigerian Petroleum Corporation (NNPC)
- Project description:** Route selection, Surveying, Data verification, Detail pipeline design, Alignment sheets for construction.
- Basic project data:**
- Route length: about 795 km
 - Applied software: Kokes, AutoCAD
 - Document types:
 - 1 : 250 000 overview
 - 1 : 100 000 route overview maps
 - 1 : 2 500 alignment sheets
- Time frame:** 1992 - 1994



JAN VORISEK

REFERENCE 02

MODERNISATION OF THE DRUZHBA CRUDE OIL PIPELINE

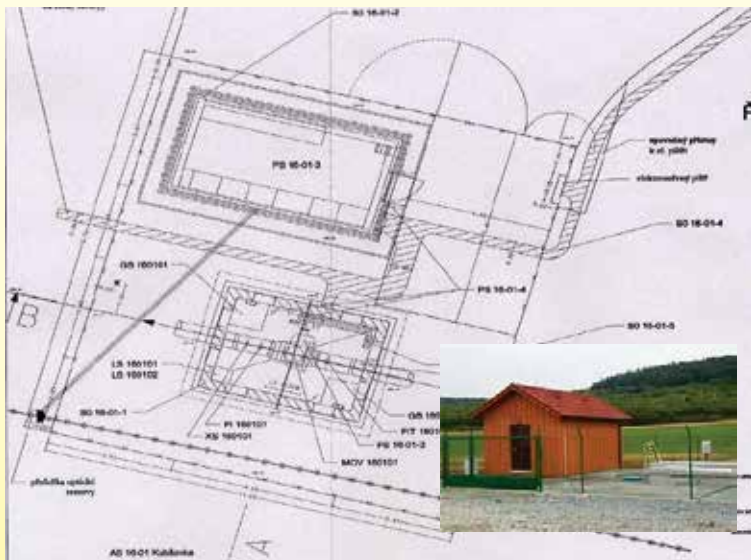
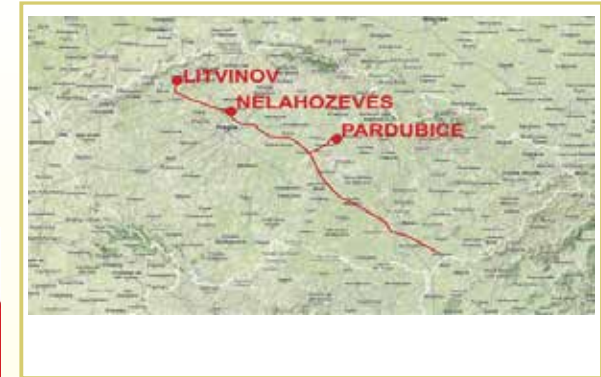
CZECH REPUBLIC

Client: MERO a.s.
Project description: Design of the valve station shafts reconstruction and FOC for systém control and operation. Documentation for work permission.

Basic project data:

- Total pipeline length: 505 km
- Applied software: MicroStation, GIS System 9
- Document types:
 - 1 : 500 000 overview map
 - 1 : 50 000 overview route maps
 - 1 : 2 000 route situation
 - 1 : 50 valve station shafts situation

Time frame: June 1997 – June 1998





JAN VORISEK

REFERENCE 03

FUJAIRAH POWER AND WATER PROJECT (PIPELINES)

UAE



Client: Technip Germany GmbH/Offset Group Abu Dhabi
Project description: Detail pipeline design, Alignment sheets for construction.
Basic project data:

- Route length: 180 km - Dia 64" (twin line), 18 km – Dia 24"
- Applied software: MicroStation, InRoads
- Document types:
 - 1 : 150 000 overview
 - 1 : 2 000 alignment sheets
 - 1 : 200 detail crossing drawings

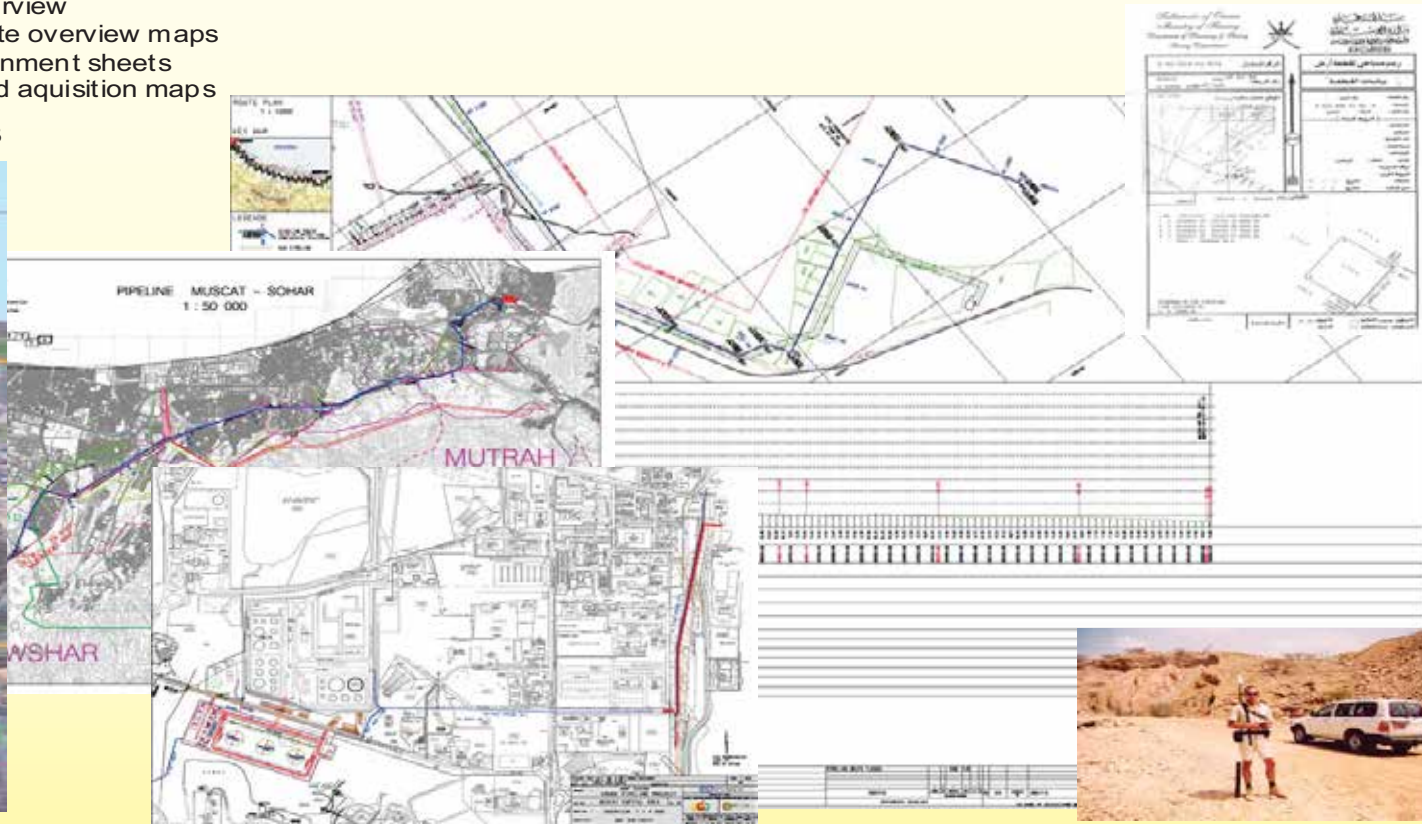
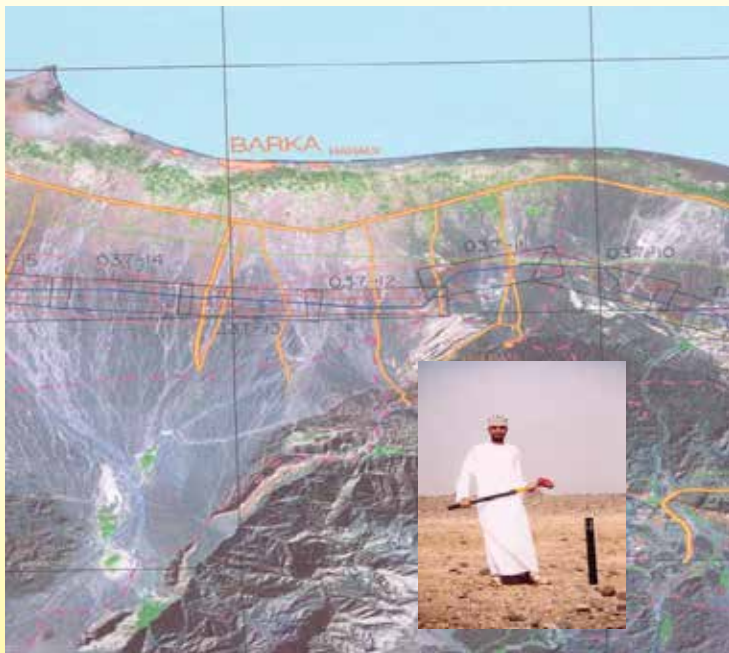
Time frame: 2001-2002

JAN VORISEK

REFERENCE 04

MUSCAT-SOHAR CRUDE OIL PIPELINE

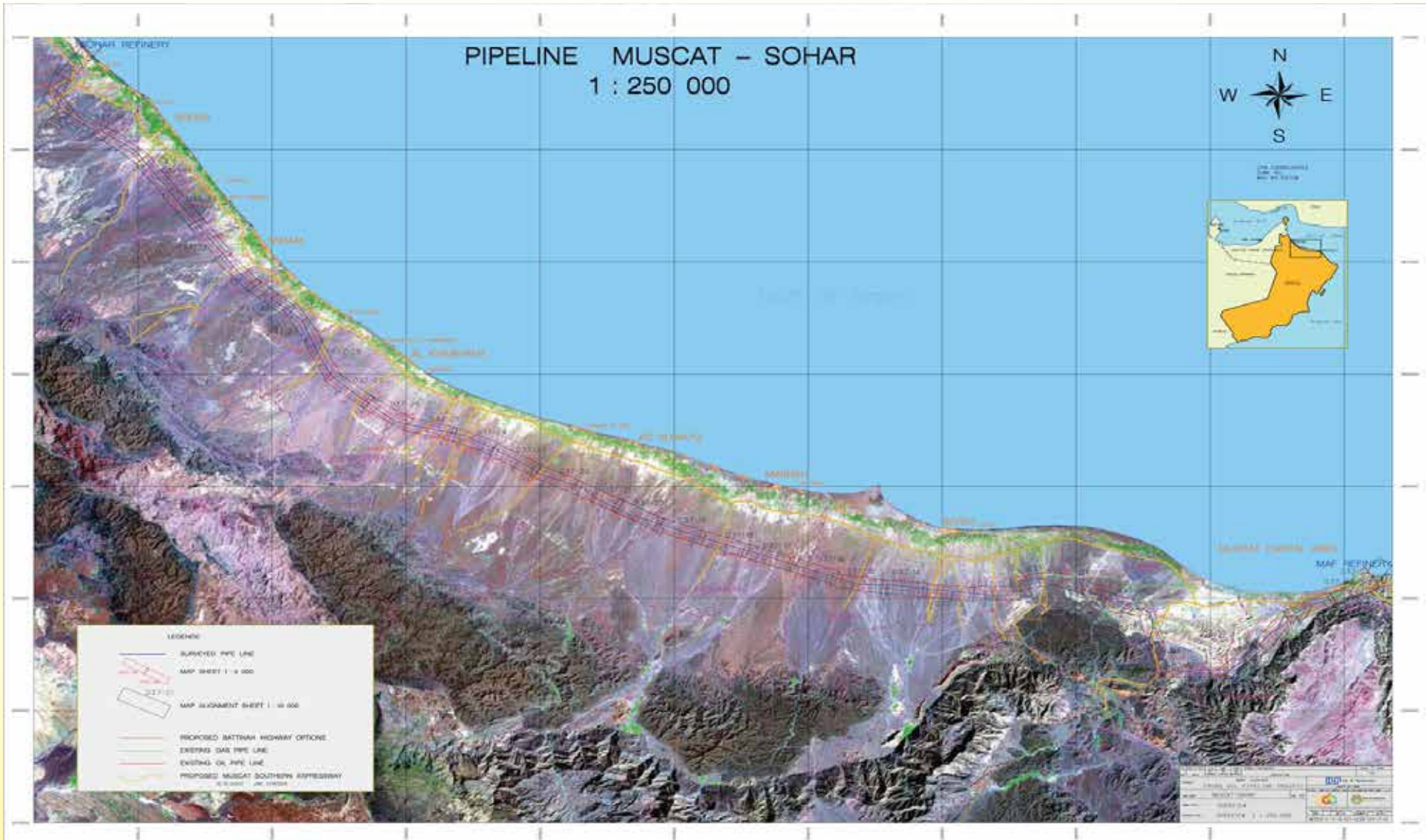
- Client:** Oman Gas Company, Oman Refinery Company
- Project description:** Route selection, DGPS Surveying, Data collection and verification, Alignment sheets for Tender stage.
- Basic project data:**
- Route length: 260 km
 - Applied software: MicroStation, ArcInfo, AutoCad
 - Document types:
 - 1 : 250 000 overview
 - 1 : 50 000 route overview maps
 - 1 : 10 000 alignment sheets
 - 1 : 5 000 land aquisition maps
- Time frame:** April 2003 – October 2003





MUSCAT-SOHAR CRUDE OIL PIPELINE OVERVIEW MAP

OMAN



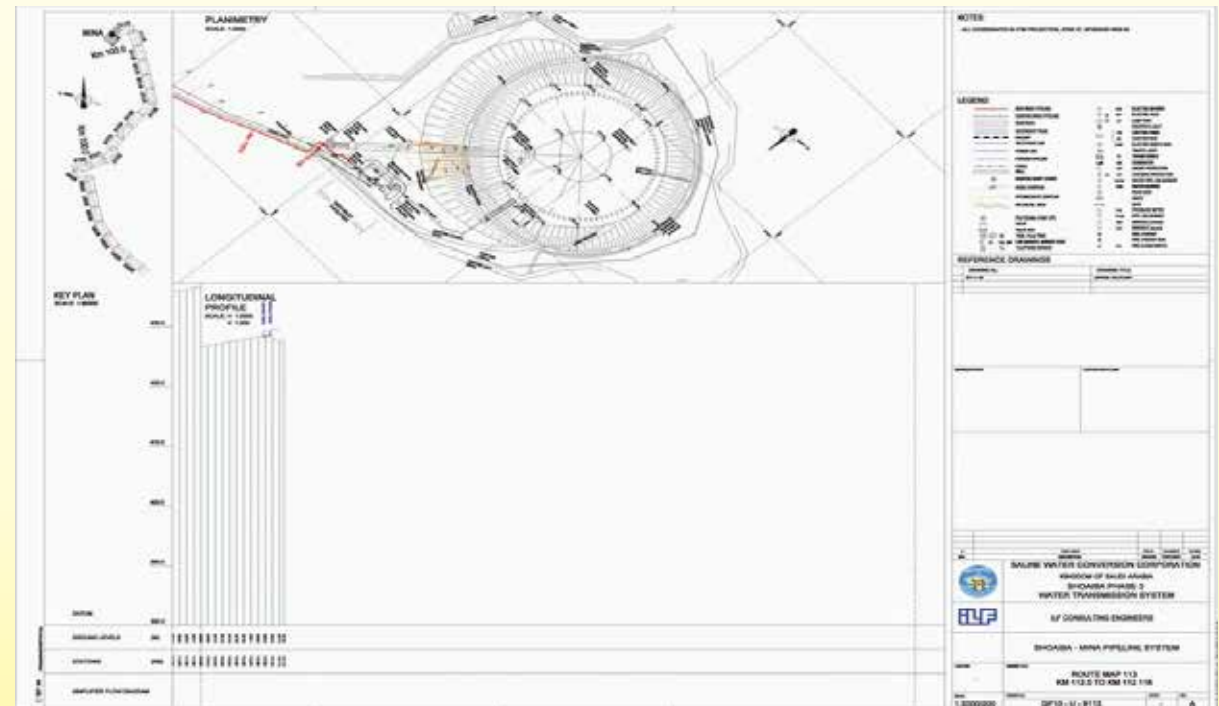
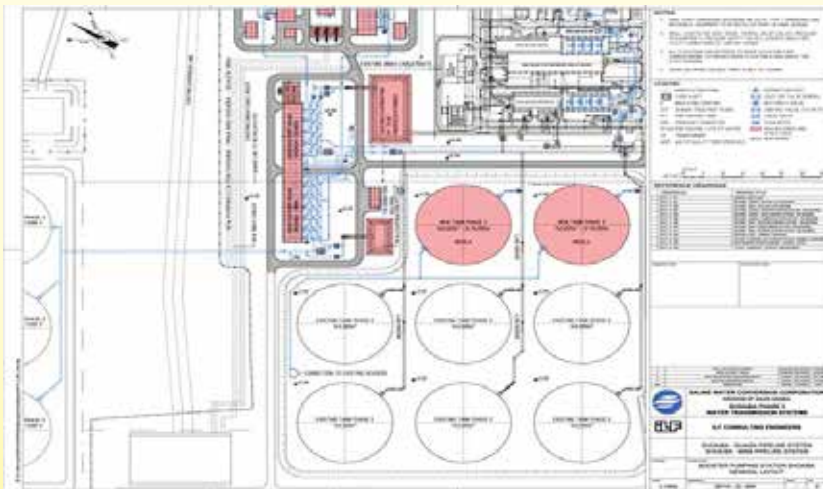
JAN VORISEK

REFERENCE 05

Three Water Pipeline Projects

- Client:** SWCC (Saline Water Conversion Corporation)
- Project description:** Data collection and verification, Part of Tender document preparation.
- Basic project data:**
- Route length: about 800 km
 - Applied software: MicroStation, AutoCAD
 - Document types:
 - 1 : 250 000 overview
 - 1 : 100 000 route overview maps
 - 1 : 2 000 alignment sheets
- Time frame:** 2003 - 2004

SAUDI ARABIA





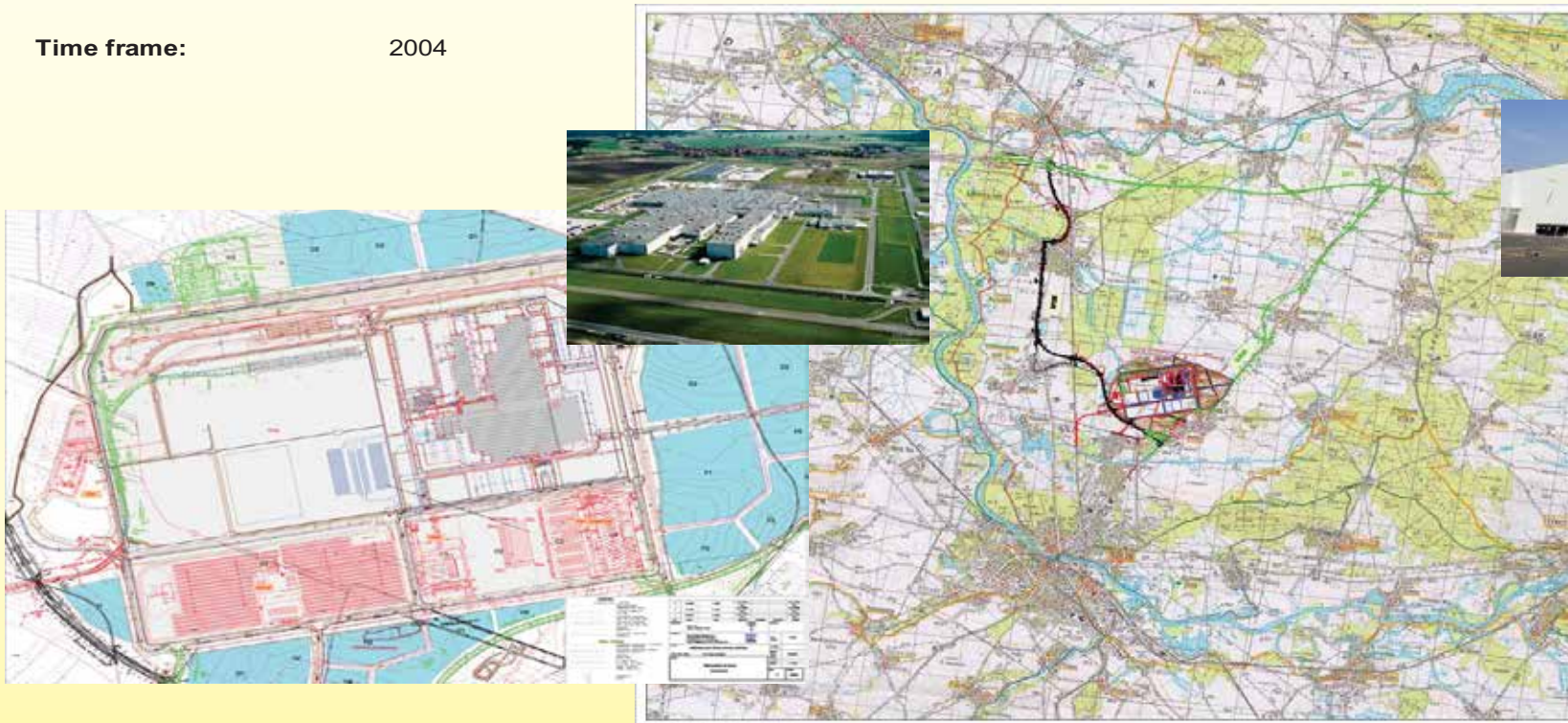
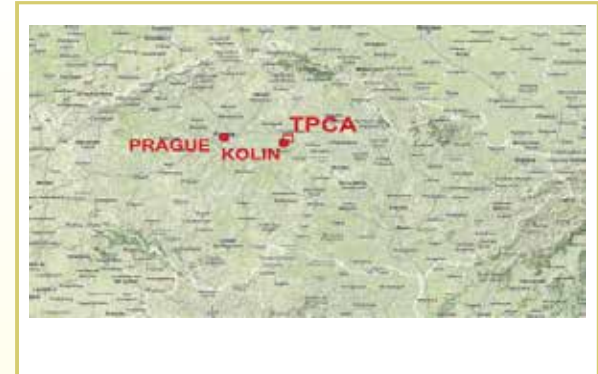
JAN VORISEK

REFERENCE 06

Industrial Area Kolin - TPCA

CZECH REPUBLIC

- Client:** Municipality of City Kolin
- Project description:** Developed area of city Kolin TPCA car factory and logistic facilities. Position: General Designer of Industrial area.
- Basic project data:**
- Area (2.5 km x 1.5 km)
 - Applied software: MicroStation, Microsoft Office
 - Document types:
 - 1 : 5 000 Monthly progress overview map. Reporting.
- Time frame:** 2004



№	27.08.2004	A. Vojtěch	Ing. Vojtěch	Ing. Vojtěch
F	10.08.2004	A. Vojtěch	Ing. Vojtěch	Ing. Vojtěch
№	10.08.2004	A. Vojtěch	Ing. Vojtěch	Ing. Vojtěch
№	Datum	Práci	Vypracoval	Overoval
Objekt:		Město Kolin Kotlírenská 76, Kolin	Stavba:	
Projektant:		IKP Consulting Engineers, s.r.o. Jankovská 938A, 146 00 Praha 4 tel: 220 742 111, fax: 220 742 888, e-mail: info@ikp.cz, www.ikp.cz	Číslo projektu:	F2004
Práci:		PRŮMYŠLOVÁ ZÓNA KOLÍN-OVČÁRY	VP 001:	
Objekt, Úděl:		KO, Ovčáry, Stavební	Stavil:	27.08.2004
Měřítko:			Podíl:	
			Formát:	1: 50 000
SITUACE ŠIRŠÍHO OKOLÍ ALLOWER LAYOUT				Číslo: 1 Revize: 001

JAN VORISEK

REFERENCE 07

GMMR, PHASE II GHADAMES-ZWARA-AZ ZAWIYAH WATER TRANSMISSION SYSTEM

LIBYA

- Client:** Al Nahr Co., Ltd
- Project description:** Route optimization, Data collection and verification, Documents for approval, Alignment sheets for construction.
- Basic project data:**
- Route length: about 600 km, Main Line PCCP – DN 1600 and GRP pipes for Branch Lines construction.
 - Applied software: MicroStation, AutoCAD
 - Document types:
 - 1 : 250 000 overview
 - 1 : 50 000 route overview Aand ROW maps
 - 1 : 2 000 alignment sheets
- Time frame:** 2005 - 2007



The collage contains several key elements:

- Technical Drawings:** Multiple sheets of engineering plans, including alignment sheets, route overview maps, and detailed cross-sections. One drawing shows a grid of lines with various colors (red, green, blue) representing different pipeline segments or stations.
- Aerial View:** A satellite-style image showing the pipeline route (in blue) across a desert landscape, connecting the coast to inland areas.
- Drilling Rig:** A photograph of a large industrial drilling rig in operation, likely used for laying the large-diameter pipes.
- Pipes:** A photograph showing long sections of large-diameter pipes (likely PCCP or GRP) stacked in a yard, ready for transport and installation.
- Site Plans:** Detailed maps showing the layout of stations, valves, and access roads along the pipeline route.



JAN VORISEK

REFERENCE 07b

**GMMR, PHASE II GHADAMES-ZWARA-AZ ZAWIYAH WATER TRANSMISSION SYSTEM
OVERVIEW MAP**

LIBYA



JAN VORISEK

REFERENCE 08

SHUQAIQ PHASE 2 WATER TRANSMISSION SYSTEM

SAUDI ARABIA

Client: Saline Water Conversion Corporation SWCC

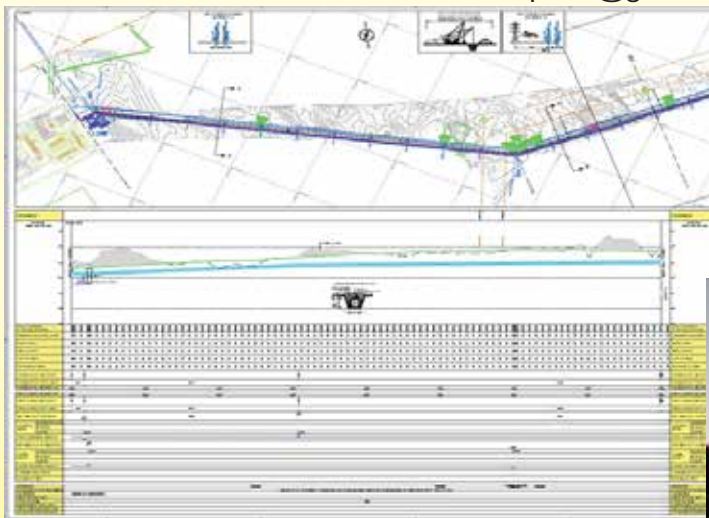
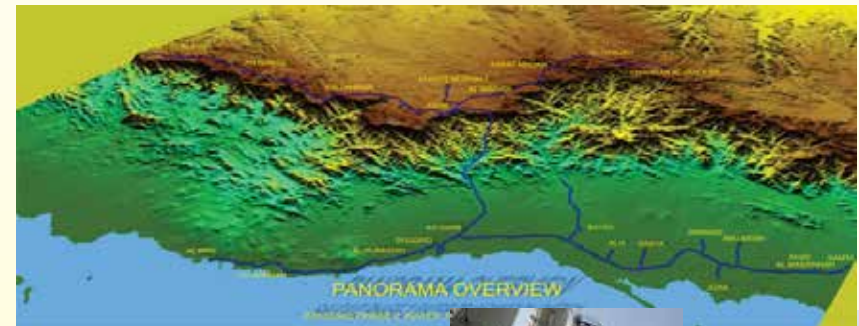
Project description: Route optimization, Data collection and verification, Documents for approvals, Alignment sheets for construction.

Basic project data:

- Overall Route length: 1000 km, Steel pipelines DN from 64" to 6", 4 Tunnels, 8 Pumping Stations, 50 Reservoirs.
- Applied software: MicroStation, In Roads
- Document types:
 - 1 : 250 000 Overview maps.
 - 1 : 10 000 Route map for Land acquisition.
 - 1 : 2 000 Alignment sheets.
 - 1 : 2 000 Work Alignment sheets.

Time frame: 2007 - 2014

Reference: Khalid Mohammad Hassan Al Safi, Chairman Supervision committee, SWCC – Shuqaiq2 WTS Project. swccshq2wts@gmail.com



SHUQAIQ PHASE 2 WATER TRANSMISSION SYSTEM OVERVIEW MAP

SAUDI ARABIA



JAN VORISEK

REFERENCE 09

MASTER PLAN FOR IMPROVEMENT OF WATER TRANSMISSION LINES AND SUPPLY SYSTEMS IN ASIR, JAZAN, MAKKAH AND AL BAHA REGIONS

Client: Ministry of Water & Electricity (MOWE).

Project description: Data collection of water sources and Infrastructure inventory (Desalination Plants, Water Treatment Plants, Pumping Stations, Reservoirs, Pipelines, Track Filling Stations, Wells, Dams). Verification of data and implementation into GIS database.

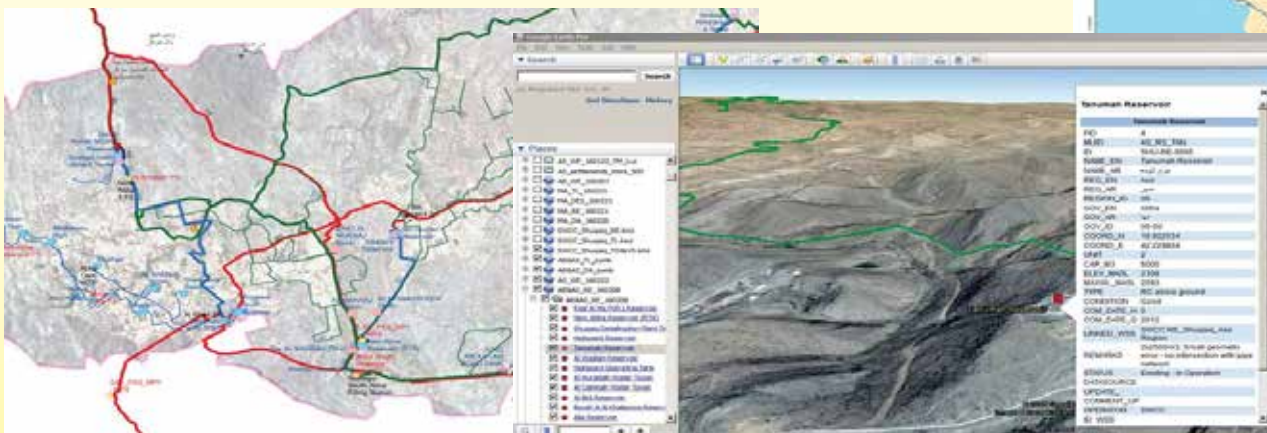
Basic project data:

- Area of 250,000 km². Regions: Makkah, Baha, Asir Jizan.
- Applied software: MicroStation, QGIS, ArcMap.
- Document and data types:
 - GIS Database
 - Project Area Maps
 - Region Maps
 - Governorate Maps

Time frame: April 2015 - March 2016

Reference: Gangolf Schmidt
 Project Manager
 gangolf.schmidt@fwt.fichtner.de

SAUDI ARABIA





Kingdom of Saudi Arabia
P.O.Box 7573 Riyadh 12222 -2160
Tel.: +966 11 2173550
Fax: +966 11 2173550 Ext. 106



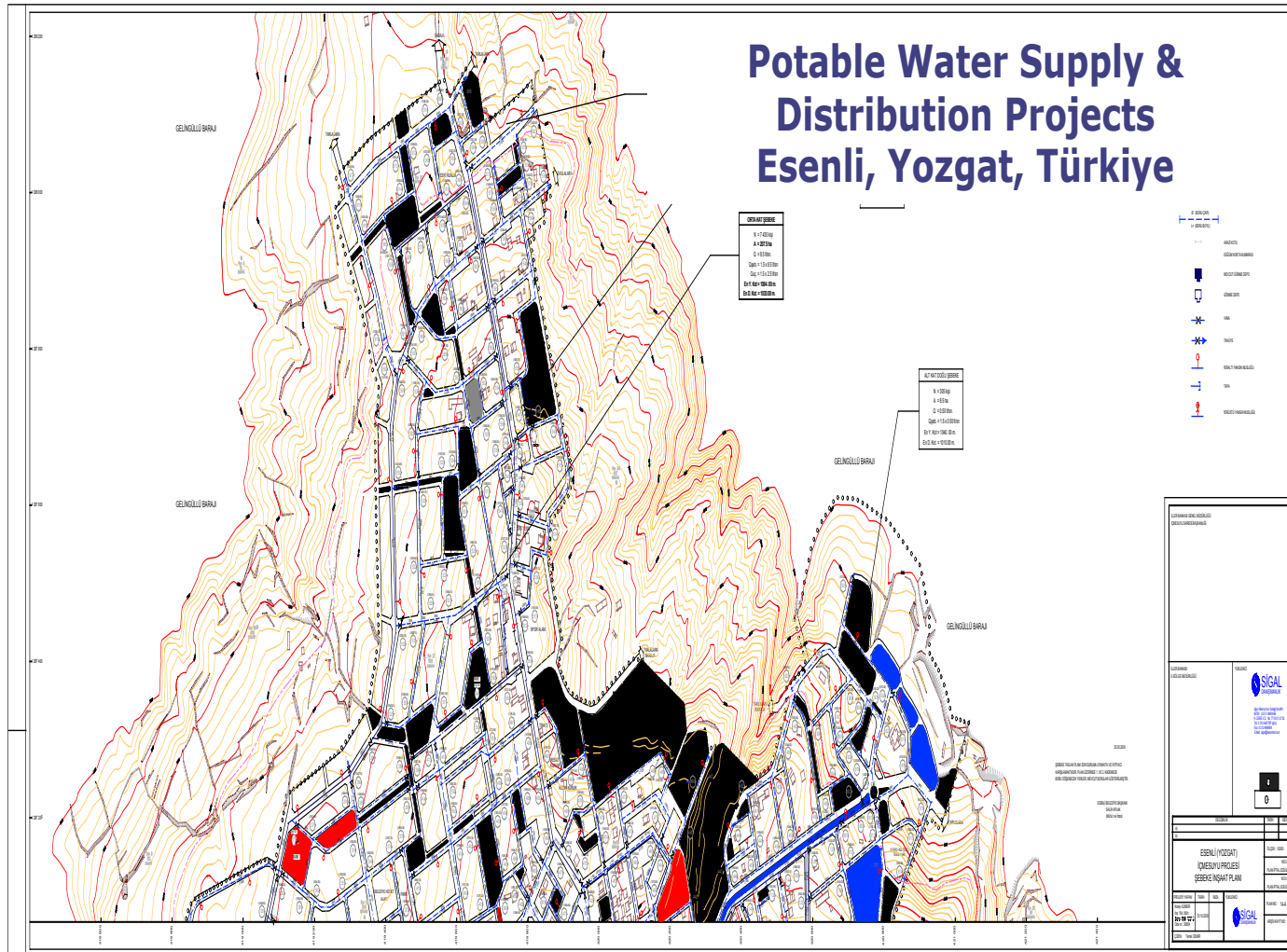
Public Park Tripoli, Libya

Road- Car Park - Railway - Railway Tunnel- Potable Water -
Firewater- Landscape - Irrigation - Lightning-
Communication- Electrical - Wastewater-Rainwater
Infrastructure Projects



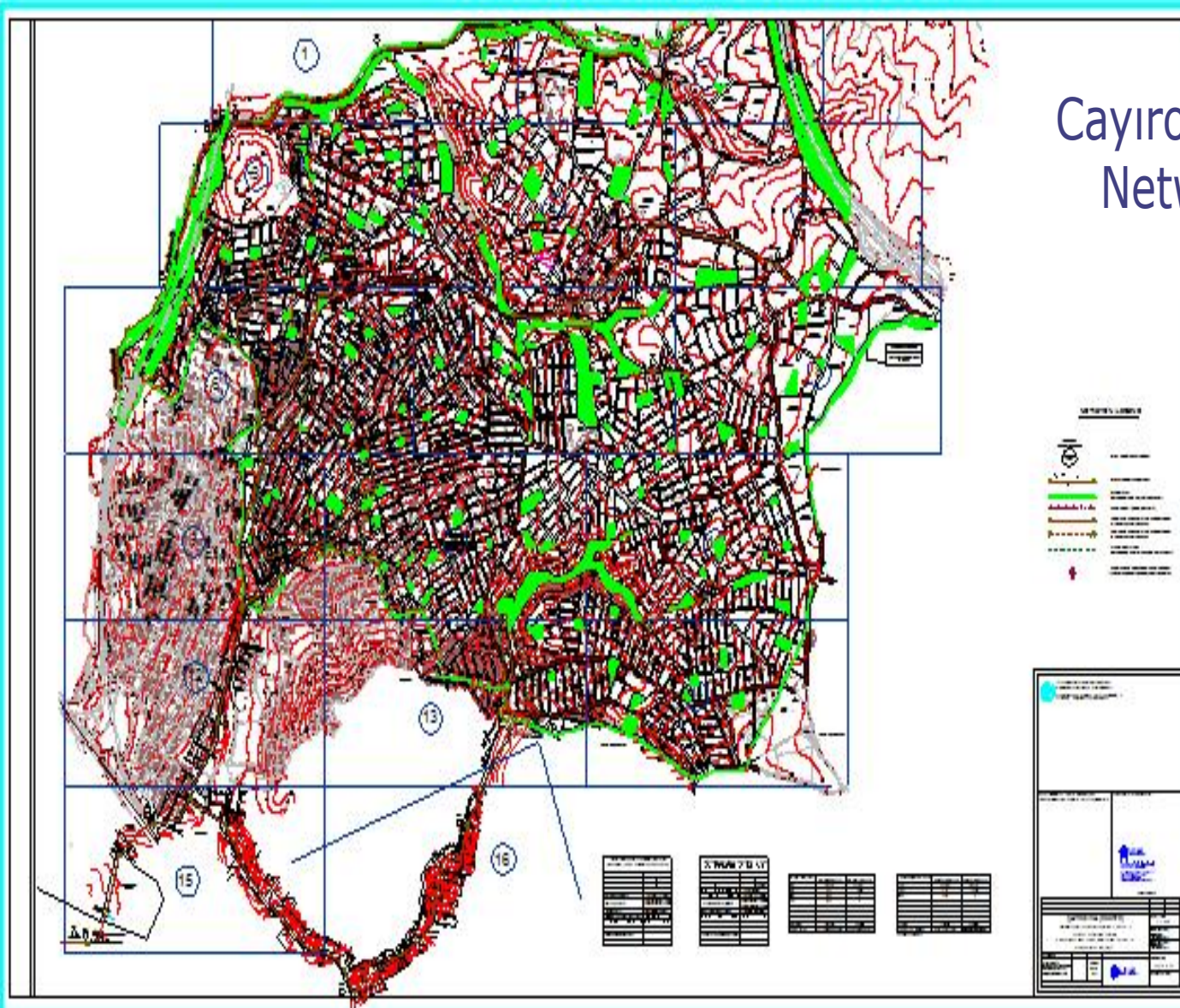
**Azerbaijan Shahdag Winter-Summer
Tourism Complex**
Infrastructure Projects







**A view from Construction Site
of Riyadh Airport, KSA
Terminal-5 Building**



Cayırova Wastewater
Network Kocaeli,
Türkiye



**Prince Muhammed
Bin Abdulaziz
International
Airport Project,
Medina KSA**

Cut & Fill Analysis and
Design of Landside
Roads



King Khaled International Airport Project, Riyadh, KSA

Potable Water Network
Firewater Network
Stormwater Network
Wastewater Network
Heating & Cooling Network
Irrigation Network
Combined Infr. Network
Roads
Traffic Analysis
Viaducts
Cut & Fill 3D Model Studies



Pulkovo Airport

New International Terminal Building and
Open Car Park Project
(Saint Petersburg – Russian Federation)
Infrastructure Projects
14,000,000 Passenger / Year



Atatürk International Airport

New International Terminal Building & Multi-
storey Car Park Project İstanbul Türkiye
Capacity of 14,000,000 Passenger/Year



Other International Airports

Esenboğa Airport, Ankara Türkiye

Georgia Tbilisi Airport

İzmir Adnan Menderes Airport,
Türkiye

Georgia Batumi Airport

Elazığ Airport, Türkiye

Bodrum Airport, Türkiye

Ohrid Airport, Macedonia

Skopje "Alexander the Great"

Airport, Macedonia

Mus Airport, Türkiye

Bagram Airport, Afghanistan

Infrastructure Projects



Prestigious & Awarded Projects

Flame Towers Baku, Azerbaijan

Haydar Aliyev Culture Centre
Baku, Azerbaijan



Astrom Towers Mass Housing
Projects İstanbul, Türkiye

Mashattan Mass Housing Projects,
İstanbul - Türkiye

Infrastructure Projects



Prestigious & Awarded Projects

Al-Mukhtar University Derne, Libya

Zorlu Center Project Istanbul,
Türkiye

Göcek Port Villas Infrastructure
Projects Göcek, Türkiye

Infrastructure Projects



Sport Facilities

Carya Golf Resort & SPA Hotel Antalya,
Türkiye

Zeynep Golf Resort Hotel Antalya,
Türkiye

Olympic Stadium Mersin, Türkiye

Baku Arena, Azerbaijan

Turkmenistan- Asghabat Stadium
Complex

Al Sunbula Stadium Al Diwaniyah, Iraq

Infrastructure Projects



Prestigious & Awarded Projects

Intercity Transit Highway – Potable Water – Wastewater – Electricity Drainage – Landscape Infrastructure Projects Doha, Qatar

Esenboğa Airport Viaducts Ankara, Türkiye

Ataturk Airport Viaducts İstanbul, Türkiye

High-Speed Train Tunnel Tripoli, Libya

Milas-Bodrum Airport Viaducts Muğla, Türkiye

Infrastructure Projects

